

March 2019

Volume 11 Issue 2

Cake Decorators Guild of N.S.W.



IT'S TIME TO  
RENEW YOUR  
MEMBERSHIP!

Juniors

Next Meeting 17th March  
making A Flower Pot



# Golden West Branch

PLEASE NOTE VENUE

**Halinda School**  
**Mimika Avenue**  
**Whalan NSW 2770**

Our February/AGM meeting was a lovely day and we are so lucky to have very talented decorators at our branch who demonstrated for us Christine Salter showed basket weaving. Then Dianne Woollard made cute little terracotta flower pots with lots of info and Joanne Farrugia made a cute witch from Seminar last year especially for those that couldn't attend.

We are happy to say that all our Committee positions are full and just to refresh your memory they are:

**President** - Rosemary Brett  
**Vice President** - Pat Dowd  
**Secretary** - Joanne Farrugia  
**Treasurer** - Ashlee Stewart  
**Membership** - Cathy Rice  
**Kitchen Co-Ordinator:** Nevie Almeida  
**General Committee:** Lyn Bales, Cathy Cumbo, Robyn Beazley and Christine Salter

We have also decided to hold our In House Judging Competition again this year. So get your thinking caps on - you could win of the great cash prizes. We would love to see more entries this year.

**Some Decorating Ideas For Halinda Easter Eggs**



# What's Happening In The March 9th Meeting

## Demonstrators

Kalpita Pandit from Color Drama Cakes - Wrapped Fondant  
Melissa Ross - Faces                      Marta Velazquez - Fairy

## Shop For The Day

Joanne Farrugia is downsizing her collection of Cake Decorating goodies.

As she is no longer teaching she is bringing lots of goodies.

Come and check out what Joanne has on offer. Please note this is CASH ONLY so bring your money with you.

## May Meeting - 4th May, 2019

Please note our May meeting date has changed for this year as a lot of our members like to attend Camden's SRD and they fall on the same day.

**Our May meeting will be held on 4th May 2019. Please make a note in your Diary**

## Juniors

Our first Juniors meeting for the year will be on 17th March and they will be making a Flower Pot.

Please ring Rosemary on 0418 435 311 for any information and to book in.

## HALINDA - Easter Egg Decorating

We will be decorating Easter Eggs at Halinda Special School on 6th April, 2019.

We would love to see you there. Spend an hour or 2 decorating Easter Eggs for the special children of Halinda.

Now is the ideal time to start making those cute little decorations for the Easter Eggs.

## **We Like To Look After Our Members.**

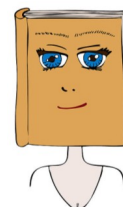


If you know anyone who is unwell let **Shirley our Welfare Officer** know and she will organise to send a card to let them know we're thinking about them. Shirley's number is 9625 9396.



## **FACEBOOK**

Don't forget to check out our Facebook page. You will find all the SRD's and what's going on at your Branch as soon as it reaches us. Type in Cake Decorators Guild Of NSW. Golden West Branch and see what's going on.



## FLORENTINE SLICE



**President**

Rosemary Brett 0418 435 311

**Vice President**

Pat Dowd 9834 1152

**Secretary**

Joanne Farrugia 0431 111 863

**Treasurer**

Ashlee Stuart 0432 764 066

**Committee**

Lyn Bales 0412 299 058

Cathy Cumbo 0402 830 869

Nevie Almeida 9628 7900

Robyn Beazley 0438 602 373

Christine Salter 4729 2736

**Delegate**

Lyn Bales 0412 299 058

**Membership Officer**

Cathy Rice 9862 8385

[goldenwest.members@gmail.com](mailto:goldenwest.members@gmail.com)

**Public Officer**

Karon Falzon 9680 3079

**Executive Committee Email Address**

[goldenwest@outlook.com.au](mailto:goldenwest@outlook.com.au)

**Ingredients:**

- 395g Condensed Milk
- 90g Butter (chopped)
- 3 Cups Cornflakes slightly crushed
- ¾ Cup Roasted flaked almonds
- ½ Cup Roasted Macadamia Nuts coarsely chopped
- ½ Cup Red Glace' Cherries halved
- ¾ Cup Sultanas
- ½ Cup Currents
- 250g Melted dark chocolate

**Method:**

Line a 20cm x 30cm pan with baking paper.

Combine cornflakes, fruits and nuts in a large bowl.

Melt butter and condensed milk over medium heat till combined, stir into cornflake mixture.

Melt chocolate and spread over the base of pan; top with cornflake mixture and refrigerate for three hours or till firm.

Remove from pan and cut into small pieces.

Makes approximately 15

**For our Morning Tea if those with last names starting with L - Z could bring in a "small" plate of something yummy for morning tea**

**Halinda School**

**Mimika Avenue**

**Whalan NSW 2770**

**Time :** Doors will open at 9.30am for 10.00am start

Entry fee - \$10 Visitors free for first visit

**Tea & Coffee Supplied**

We kindly ask that all mobiles are switched to "Silent" during the Dem's, thank you."

**Plenty of Parking** - Disability Parking at the front door